



FP515S | French Press Coffee Maker

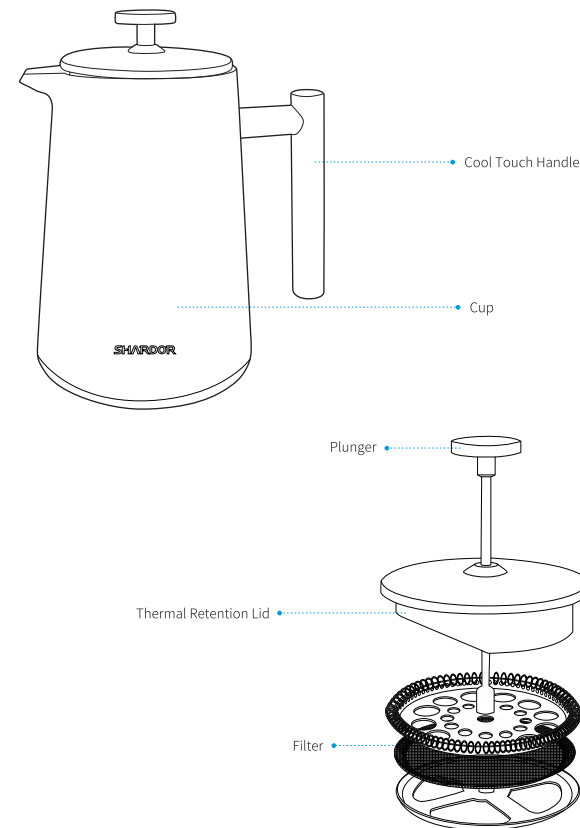
USER MANUAL

Important Safety Instructions

When using an electrical appliance, basic precautions should always be observed, including the following. Read all instructions before using this appliance.

- **WARNING**
 1. Do not use for industrial purposes.
 2. Defective components must always be replaced with original replacement parts. Only such parts will guarantee that the safety requirements are fulfilled.
 3. The appliance will use for the purpose which mention in this manual. Supplier will not take the responsibility for the defect and rights and interests if the appliance not used according the manual.
 4. This appliance shall not be used by children.
 5. Appliances can be used by persons with reduced physical, sensory or mental capabilities or lack of experience and knowledge if they have been given supervision or instruction concerning use of the appliance in a safe way and if they understand the hazards involved.
 6. Appliances shall be potential injury from misuse.
 7. Take care when handling hot liquids.
 8. Excessive force when plunging can result in scalding hot liquid being rejected from top of pot.
 9. Do not use pot that is scratched, cracked or damaged in any way.

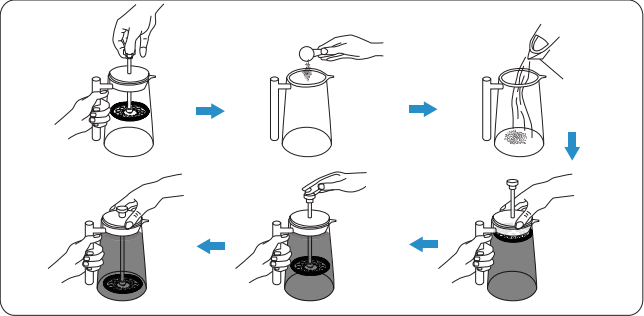
Features



Specification

Model	FP515S
Item Weight	1kg
Dimensions	7.6*5.0*4.5 inches
Capacity	34oz/1000mL

Opearation



- 1.Pull Plunger from pot.
- 2.Add coarse ground coffee.
- 3.Pour hot water into pot.Leave a minimum of 20mm space at the top of the pot.
- 4.Replace the plunger and turn the spout opening away from the spout.
- 5.Allow to brew for a least 4 minutes. DO NOT plunge.
- 6.When the coffee has brewed use the weight of your hand to gently push the plunger down.
- 7.If the filter become clogged, remove the plunger, stir the coffee and plunge again.
- 8.Align the spout opening to the spout and pour the coffee.

Assembly

Rotate the plunger, remove the two firmware and remove the filter.

Cleaning & Maintaining

Wash in warm soapy water as soon as possible after use.
Dry thoroughly after cleaning.
Never leave dirty stainless steel to soak and always dry stainless steel immediately after washing with a clean,dry cloth.
Wash stainless and silver plated stainless separately to avoid damaging the silver plate.

Disposal



This product should not be disposed with other household wastes. To prevent possible harm to the environment or human health from uncontrolled waste disposal, you should recycle it responsibly to promote the sustainable reuse of material resources. Please use the return and collection systems or contact the retailer where the product was purchased to dispose your used product. They can take this product for environmental safe recycling.

Warranty

- **Limited 12-month Warranty**
We warrants this product against any defects that are due to faulty material or workmanship for the life of the product. This warranty does not include damage to the product resulting from accident or misuse. If the product should become defective within the warranty period, we will replace it free of charge.
Please contact us and attach your name, address, phone number and order number.
For contacting us, Please see the Customer Service Section. We will be happy to your service.

This warranty does not cover products damaged by the following:

- 1.Accident, misuse, abuse or alteration of the product.
- 2.Servicing by unauthorized persons.
- 3.Use with unauthorized accessories.
- 4.Connecting it to incorrect current and voltage.
- 5.Wrapping cord around appliance causing premature wear and breakage.
- 6.Any other conditions beyond our control.

Customer Service

For FAQ and more information, Please contact us. We will be happy to your service.

After-sale Email: warranty@shardor1.com