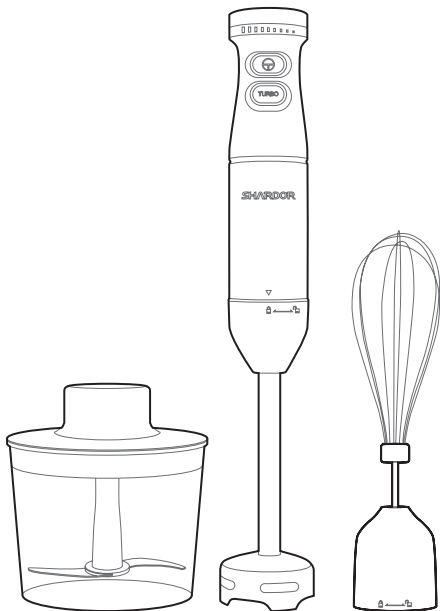


# SHARDOR



## HB615S | Hand Blender

USER MANUAL

# CONTENTS

■ Important Safety Instructions .....	1
■ Specification .....	2
■ Parts Identification .....	3
■ Assembly .....	4
■ How to Use the Attachments .....	5
■ Cleaning and Maintenance .....	6
■ Disposal .....	7
■ Warranty .....	8
■ Customer Service .....	8

# Important Safety Instructions

When using an electrical appliance, basic safety precautions should always be followed, including the following:

1. READ ALL INSTRUCTIONS CAREFULLY.
2. Unplug the blender from the outlet when not in use, when performing maintenance and before cleaning. To unplug, grasp the plug and remove from the electrical outlet. Never pull the cord.
3. To protect against electrical shock, do not put the motor body, cord or electrical plug of this hand blender in water or other liquids. Only the detachable blending shaft and other certain parts of this appliance have been designed for immersion into water or other liquids. Never submerge any other portion of this unit. If the hand blender falls into liquid, remove it immediately. Do not reach into the liquid without unplugging the unit first.
4. This appliance should not be used by children. To avoid possible accidental injury, close supervision is necessary when any appliance is used by or near children.
5. Avoid contact with moving parts.
6. During operation keep hands, hair and clothing, as well as spatulas and other utensils away from attachments and any mixing containers to reduce risk of injury to persons and/or damage to the appliance. A spatula may be used, but must only be used when the unit is not operating.
7. Do not operate any appliance with a damaged cord or plug, or after the appliance has malfunctioned or has been dropped or damaged in any way or is not operating properly.
8. Remove the detachable shaft from the blender before washing the blades or shaft.
9. Blades are SHARP. Handle carefully when removing, inserting or cleaning. Exercise the same care when removing or inserting the cutting blade disc for the food processor attachment.
10. When mixing liquids, especially hot liquids, use a tall container or make small quantities at a time to reduce spillage, splattering and possibility of injury from burning.
11. To reduce the risk of injury, never place the chopper/grinder attachment cutting blade on a base without first putting the work bowl properly in place.
12. Be certain the food processor attachment cover is securely locked in place before operating the appliance. Do not attempt to remove cover until the blade has stopped rotating.
13. Check the work bowl for presence of foreign objects before using.
14. The use of attachments or accessories not recommended may cause fire, electrical shock or risk of injury.

15. Do not use outdoors or for other than its intended use.
16. Do not let any cord hang over the edge of the table or counter. Do not let the cord contact hot surfaces, including stovetops.
17. Make sure the appliance is off, the motor has stopped completely, and the appliance is unplugged from the outlet before putting on or taking off attachments, and before cleaning.
18. Do not operate this appliance in an appliance garage or under a wall cabinet. When storing in an appliance garage, always unplug the unit from the electrical outlet. Not doing so could create a risk of fire.

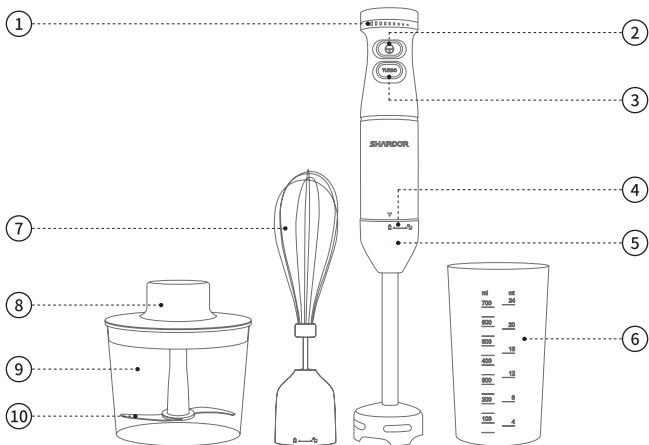
**NOTE:**

To reduce the risk of electrical shock, this plug will fit in an outlet only way. If the plug does not fit in the outlet, reverse the plug. If it still does not fit, contact a qualified electrician. Do not modify the plug in any way.

## Specification

Brand	SHARDOR
Model	HB615S
Rated Power	225W
Rated Voltage	US120V
Rated Frequency	60Hz
Dimensions	10.24x7.87x9.53inch
Color	Silver

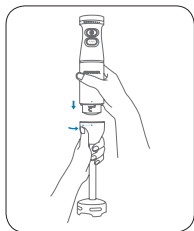
# Parts Identification



- ① Speed Slide Dial
- ③ Turbo Button
- ⑤ Main Body Housing
- ⑦ Detachable Whisk Attachment
- ⑨ Chopper Bowl

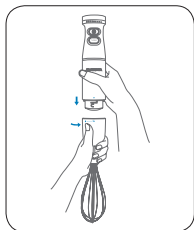
- ② Switch Button
- ④ Safety Lock
- ⑥ Mixing Beaker
- ⑧ Chopper Bowl Cover
- ⑩ Blending Blade

# Assembly



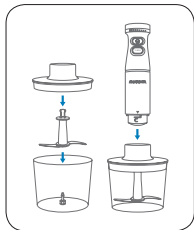
## Blending Attachment

1. Align the main body with the blending shaft and push the pieces together until you hear and feel them click together. It may be helpful to press the release button when assembling.
2. Plug the power cord of the hand blender into an electrical outlet.



## Whisk Attachment

- Align the main body with the assembled whisk attachment and push the pieces together until you hear and feel them click together. It may be helpful to press the release button when assembling.



## Chopper Bowl Attachment

1. Place the chopping/grinding blade into the center of the work bowl over the metal blade shaft.
2. Place the bowl cover on top of the work bowl.
3. Connect the main body to the top of the work bowl cover.
4. Align the food processor cover's drive shaft with the ribbed opening on the underside of the main body.
5. Plug the power cord of the hand blender into an electrical outlet.

# How to Use the Attachments

## Blending Blade Attachments

The specially blade is for mixing and pureeing all kinds of foods, including salad dressings, powdered drink products, soups, sauces and blended drinks like milkshakes.

This blade mixes and stirs while adding only a minimum of air to your mixture.

A gentle up-and-down motion is all you need to make the most flavorful, full-bodied recipes. Be careful never to remove the blending shaft from the liquid while in operation, for it will splatter. Tilt the pan or bowl away from you if needed to ensure the protective blade guard on the blending shaft is fully submerged.

1. Put the blending shaft into the mixture to be blended.
2. Press and hold the desired speed button. The hand blender will continue to run as long as the button is pressed in. To turn the hand blender off, release the power button and the motor will stop.
3. Unplug immediately after use. Caution: Do not put fingers near blade. To dislodge food, unplug the hand blender from the outlet first.
4. Do not use in non-stick cookware to avoid scratching.

## Whisk Attachment

1. Insert the whisk attachment into the main body.
2. Plug the electrical cord into a wall socket.
3. Put the whisk into the mixture that is to be blended.
4. Press and hold the desired speed button. The hand blender will continue to run as long as the switch is pressed. To turn the hand blender off, release the power button and the motor will stop.

### **Chopper Bowl Attachment**

1. Place the work bowl firmly on a flat, sturdy surface like a countertop.
2. Put food in the work bowl. Be sure the food is cut into small pieces, and the bowl is not overloaded.
4. Press and hold the desired speed button.

Note: Due to the powerful motor provided with this unit, we recommend using one hand to support the work bowl during operation.

5. When you have finished processing the food, stop the blender by taking your finger off the desired speed button.
6. WHEN THE BLADE STOPS MOVING, unplug the unit.
7. Remove the main body with the cover from the work bowl.
8. Carefully remove the chopping blade.

NEVER TOUCH THE BLADE ITSELF.

9. Remove food with a spatula.

Note: Do not operate the chopper/grinder attachment without food contents in the work bowl.

10. Do not use the chopping bowl or the beaker in a microwave oven.

## **Cleaning and Maintenance**

### **Hand Blender**

Always clean the main body and blending shaft thoroughly after using. Remove the blending shaft from the main body. Clean the main body only with a sponge or damp cloth. Do not use abrasive cleaners that could scratch the surface. To clean the blending shaft, wash by hand in hot water using mild detergent. Be mindful of the fixed razor-sharp edges.

### **Whisk Attachment**

To clean your whisk attachment, simply release the attachment from the motor body housing. Once the whisk is removed, detach the metal whisk from the gear by pulling the two pieces apart. To clean the gear, simply wipe with a damp cloth. To clean the metal whisk, wash with warm soapy water or put into the dishwasher. Do not submerge the gearbox in water or any other liquid. Any service, other than cleaning and normal user maintenance, should be performed by an authorized Shardor Service.



### **Chopper Bowl Attachment**

To simplify cleaning, rinse the work bowl, blade and cover immediately after use so that food won't dry on them. Do not submerge the work bowl cover in water or put in the dishwasher. Wash the chopping blade and work bowl in warm, soapy water. Rinse and dry. Wipe the underside of the cover with a sponge or damp cloth to remove any food. Wash the blade carefully. Avoid leaving it in soapy water where it may remain unseen.

You can wash the work bowl and chopping blade, on the upper shelf of your dishwasher. Unload the dishwasher carefully to avoid contact with the sharp blade. Wipe the motor body and top of the cover with a damp sponge or cloth. Dry it immediately. Never submerge the motor body or the cover in water or other liquids.

The food processor attachment is intended for HOUSEHOLD USE ONLY.

## **Disposal**

This product should not be disposed of with other household wastes. To prevent possible harm to the environment or human health from uncontrollable waste disposal, it should be recycled responsibly.

# Warranty

## Limited 2-year Warranty

We warrant this product against any defects that are due to faulty material or workmanship of it. This warranty does not include accident or misuse. If the product gets defective within the warranty period, we will replace it free of charge.

Please contact us with your name, address, phone number and order number. Contacting us we will be happy service for you.

## This warranty does not include the following situation:

1. Accident, misuse, abuse or alteration of the product.
2. Servicing by unauthorized persons.
3. Use with unauthorized accessories.
4. Connecting it to incorrect current and voltage.
5. Wrapping cord around appliance causing premature wear and breakage.
6. Any other conditions beyond our control.

# Customer Service

For FAQ and more information, please contact us. We are glad to be of service.

After-sale Email: [warranty@shardor1.com](mailto:warranty@shardor1.com)