

SHARDOR



FP515S | French Press Coffee Maker

USER MANUAL

CONTENTS

■ Important Safety Instructions	1
■ Specification	1
■ Parts Identification	2
■ Operation	3
■ Assembly	4
■ Cleaning & Maintaining	4
■ Disposal	4
■ Warranty	5
■ Customer Service	5

Important Safety Instructions

Basic safety precautions should always be observed, including the following. Read all instructions before using this appliance.

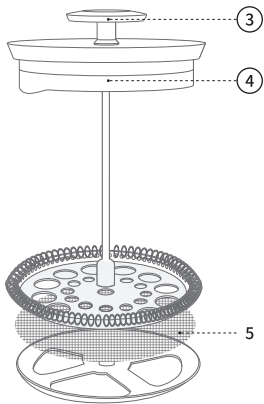
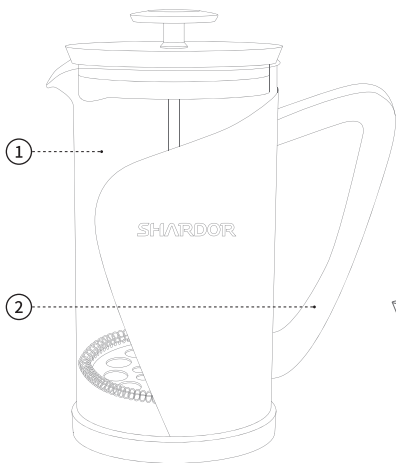
WARNING

1. Do not use it for industrial purposes.
2. Defective components must always be replaced with original replacement parts. Only such parts will guarantee that the safety requirements are fulfilled.
3. The appliance will use for the purpose mention in this manual. The supplier will not take the responsibility for the defect and rights and interests if the appliance not used according to the manual.
4. This appliance shall not be used by children.
5. The product shall be potential injury from misuse.
6. Take care when handling hot liquids.
7. Excessive force when plunging can result in scalding hot liquid being rejected from the top for pot.
8. Do not use a pot that is scratched, cracked or damaged in any way.

Specification

Brand	SHARDOR
Model	FP515S
Item Weight	1000ml
Dimensions	4.2x6x8.3inch
Color	Silvery

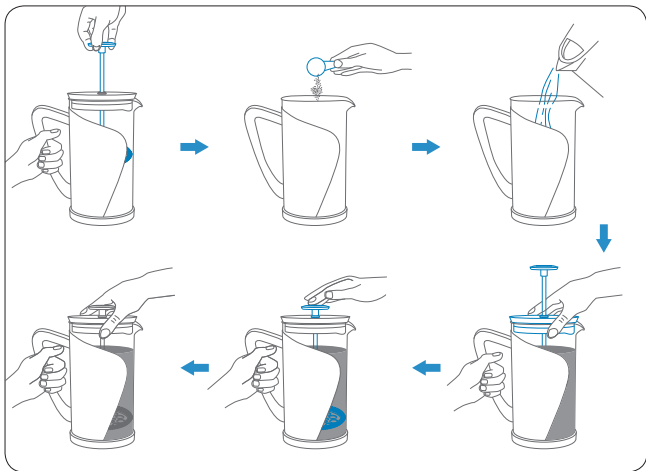
Parts Identification



- ① Cup
- ③ Plunger
- ⑤ Filter

- ② Cool Touch Handle
- ④ Retention Lid

Operation



Operation:

1. Pull Plunger from the pot.
2. Add coarse ground coffee.
3. Pour hot water into the pot. Leave a minimum of 20mm space at the top of the pot.
4. Replace the plunger and turn the spout opening away from the spout.
5. Allow brewing for a least 4 minutes. DO NOT PLUNGE.
6. When the coffee has brewed use the weight of your hand to gently push the plunger down.
7. If the filter becomes clogged, remove the plunger, stir the coffee, and plunge again.
8. Align the spout opening to the spout and pour the coffee.

Assembly

Rotate the plunger remove the two firmware and remove the filter.

Cleaning & Maintaining

1. Note the carafe is fully removable from the stainless-steel housing. Wash thoroughly before use.
2. Wash in warm soapy water as soon as possible after use.
3. Dry thoroughly after cleaning.

Disposal

This product should not be disposed of with other household wastes to prevent possible harm to the environment or human health from uncontrolled waste disposal, you should recycle it responsibly to promote the sustainable reuse of material resources. Please use the return and collection systems or contact the retailer where the product was purchased to dispose of your use product. They can take this product for environmentally safe recycling.

Warranty

Limited 2-year Warranty

We warrant this product against any defects that are due to faulty material or workmanship for the life of the product. This warranty does not include damage to the product resulting from accident or misuse. If the product should become defective within the warranty period, we will replace it free of charge.

Please contact us and attach your name, address, phone number and order number.

For contacting us, please see the Customer Service Section. We will be happy to your service.

This warranty does not include the following situation:

1. Accident, misuse, abuse or alteration of the product.
2. Servicing by unauthorized persons.
3. Use with corrosive products.
4. For commercial use, resulting in premature wear and tear.
5. Any other conditions beyond our control.

Customer Service

For FAQ and more information, please contact us. We are glad to be of service.

After-sale Email: warranty@shardor1.com